

Prospectus

LONDON
DESIGN
BIENNALE
2025

1	An Invitation
2	London Design Biennale, June 2025
5	Theme & Artistic Director
6	Previous Participants
8	The Venue, Somerset House
9	Exhibition Spaces
22	The Medals
25	Events & Official Receptions
26	Public Programme
28	Media
30	Taking Part
36	Timeline
38	Partnership Opportunities

We are delighted to support London Design Biennale in inviting you to London in June 2025 to join creatives from across the world celebrating incredible design.

Exhibitions such as London Design Biennale are a shining example of international cooperation and exchange, revealing why design deserves its reputation as being among the highest forms of human creativity. It is a profession we – as a Government – absolutely prize, recognising design’s power to bring people from all corners of the globe together across disciplines and borders.

From furniture to buildings, airplanes to websites, UK design generates billions of pounds for our economy, every year. At London Design Biennale, its power is as an international gathering and force for good, where countries, cities and territories join alongside one another to exchange views, tell stories, address global challenges, and imagine better futures for us all.



RT. HON LUCY FRAZER KC MP

SECRETARY OF STATE FOR DIGITAL, CULTURE, MEDIA AND SPORT (DCMS)

An Invitation

It is a pleasure and an honour to invite the nations of the world to return to our great city in June 2025 for the fifth edition of London Design Biennale. London is a global creative capital, and we look forward to welcoming exhibitors and audiences to showcase and celebrate design and innovation at Somerset House in the heart of London.

Over the past four Biennales more than 80 of the world’s countries, cities and territories have joined us, united by the power of design to improve lives. Design is not only part of everyday life but also through innovation and imagination provides us with opportunities to visualise better collective futures in changing times.

London Design Biennale plays a key role in harnessing the creativity and innovation of the international community. Our 2025 event will bring us together again for a vigorous exchange of ideas and ingenuity – the currency of London’s world-leading creative economy.

I hope you will join us.



SADIQ KHAN
MAYOR OF LONDON

London

London Design Biennale is a three-week long international exhibition and events programme located at historic Somerset House in the heart of London. Featuring world leading design innovation, creativity and research from participants across the globe, the Biennale champions the importance and universal relevance of design in contemporary life and culture.

In 2025, the Biennale will celebrate its 5th edition. Building on the four previous shows, the 2025 Biennale will provide a global platform for designers and ideas that will change our world. Accompanying London Design Biennale 2025 will be an inspiring programme of curated events, talks, performances and workshops, alongside high-level receptions and networking opportunities. Through the Biennale and associated programme of activity, participants not only engage the public and media but also make valuable connections at government and business level.

Design

In June 2025, the world's most ambitious countries, cities and institutions will again have the opportunity to exhibit the best of their design talent and creative culture. This invitation outlines the key information and next steps for those interested in taking part.

You can register your interest and begin discussing an idea with us at any point; contact details can be found at the end of this document. The online application is now open and contains further guidance for prospective participants.

Biennale

5-29
June
2025

“We believe design is an international language
which everyone understands.”

SIR JOHN SORRELL CBE
CO-FOUNDER
LONDON DESIGN BIENNALE

Directors' Letter

London Design Biennale is an international exhibition and thought leadership forum bringing world leading design innovation from across the globe to the heart of London. Launched in 2016, over four editions it has grown to be a fixture of the cultural calendar – to date more than 80 countries have participated. 2025 will be the 5th edition, and up to 50 countries, cities, territories and institutions will be joining us for the anniversary.

The event is an opportunity for exhibitors to grow their network, connect with the London design landscape, make valuable contacts at government and business level and speak to an international audience. In the magnificent surroundings of Somerset House, countries around the world join the Biennale's growing community of creative thinkers and innovators to challenge perceptions and communicate cultural identity and design talent on a global stage.

London Design Biennale presents the opportunity to connect with worldwide creativity as it adapts to changing social and environmental needs and reveals design's ability to drive change and find solutions for the benefit of all.

London Design Biennale 2025 will showcase design's potential to inspire, inform and entertain and its power as a transformative global tool.

We look forward to welcoming you to London Design Biennale's world stage



VICTORIA BROACKES
DIRECTOR
LONDON DESIGN BIENNALE



BEN EVANS CBE
EXECUTIVE DIRECTOR
LONDON DESIGN BIENNALE

Theme & Artistic Director

London Design Biennale invites participants to respond to a universal theme set by the Artistic Director for that edition. In 2023, the theme 'The Global Game: Remapping Collaborations' was set by the Nieuwe Instituut, the Dutch national museum and institute for architecture, design and digital culture, headed by Aric Chen.

We look forward to announcing the Artistic Director and new theme in 2024. Before then, we encourage interested countries, cities, territories, designers and institutions to register their interest and begin the participation process.



Previous Participants

Abu Dhabi	China	Finland
African Diaspora	Colombia	France
Albania	Croatia	Germany
Antarctica	Cuba	Ghana
Argentina	Democratic Republic of the Congo	Greece
Australia	Denmark	Guatemala
Austria	Dominican Republic	Hong Kong
Belgium	Dubai	Hungary
Bidi Bidi Refugee Settlement	Dundee	India
Brazil	Humanitarian Pavilion	Indonesia
Canada	Egypt	Ireland
Chile		Israel
Czech Republic		Italy
		Japan

Malta	Palestine	Spain
Nigeria	Pakistan	Sweden
Kuwait	Peru	Switzerland
Latvia	Poland	Taiwan
Lebanon	Portugal	Tunisia
Leeds	Puerto Rico	Turkey
Liverpool	Qatar	UAE
Mexico	Refugees' Pavilion	UK
Mongolia	Romania	Ukraine
The European Union Delegation to the UK	Russia	USA
The Netherlands	Saudi Arabia	Venezuela
New York City	Serbia	
Nile Region	Somalia	
Norway	South Africa	
	South Korea	

& Medal Winners

London Design Biennale is hosted at Somerset House.

A powerhouse for contemporary arts and culture, Somerset House is one of London's most visited attractions with over 2 million visitors annually. The historic, Grade I Listed building is positioned on the banks of the river Thames in the heart of London. Located on the Strand between London Bridge and Waterloo Bridge, it is near to iconic tourist destinations including Trafalgar Square, Buckingham Palace and London's famous Theatreland.

The Edmond J. Safra Fountain Court was the first major public fountain scheme to be commissioned in London since 1845 and is one of London's most vibrant public spaces. The Courtyard forms the epicentre of this spectacular setting and is the centrepiece of every London Design Biennale exhibition.

From its 18th century origins to today, Somerset House has been a place for debate and discussion – an intellectual hub for the nation. It is now home to the biggest community of creative organisations in central London including the Courtauld Gallery and Institute of Art, King's College London, 'Somerset House Studios' and over 400 other creative businesses, which cements its position as a leading cultural and design destination in London.

The Venue

We are delighted that Somerset House is the host for London Design Biennale, an event which is now firmly established on the global cultural map as a highlight of design inspiration, celebration and wonder.

As the home of cultural innovators, Somerset House is home to a resident community of creative enterprises, arts organisations, artists and makers, making us a centre of new ideas, with a cultural programme offering alternative perspectives on the biggest issues of our time.

From our historic site in the heart of London, we work globally across art, creativity, business, and non-profit, nurturing new talent, methods and technologies.

Like the London Design Biennale, we sit at the meeting point of artistic and social innovation, bringing worlds and minds together to create surprising and often magical results. Every edition of the London Design Biennale features Somerset House creative residents from around the world, and the Biennale is an important moment when we reinforce our enduring ties to the international creative community.

It is with great excitement and anticipation that we look ahead to 2025 and the diversity of creative visions that we know will emerge from participating countries, and which will continue to inspire audiences.



JONATHAN REEKIE CBE
DIRECTOR, SOMERSET HOUSE

Exhibition

The beautifully restored galleries at Somerset House provide participants with the opportunity to display their work in one of London's most architecturally splendid venues. The exhibition spaces are diverse in size and style, from daylit and 'white-box' rooms to atmospheric and dark immersive galleries.

In addition, exceptional outdoor exhibition spaces are available within the Edmond J. Safra Fountain Court, centred around the iconic fountains and surrounded on all sides by spectacular 18th century architecture.



UAE, *Tinkah*



Czech Republic, *Planes of Perception*

Spaces

Exhibition spaces range from 10m² to 100m² and can interlink to create larger rooms to suit any design proposal and budget. Outdoor installations can vary in size and scale and proposals for these spaces are assessed on a case-by-case basis.

For overseas teams we have virtual tours available to view. For those who are UK based we recommend visiting Somerset House in-person to gain a full understanding of the potential for each space. On site or virtually, the London Design Biennale team is available to support you to identify which gallery will best complement and enhance your design idea. Please let us know if you would like to arrange a virtual tour, a viewing or to seek preliminary advice.



UN/UK Pavilion

2021

Forest for Change *Project Everyone & Es Devlin*

LONDON BIENNE

LONDON BIENNE

LONDON BIENNE

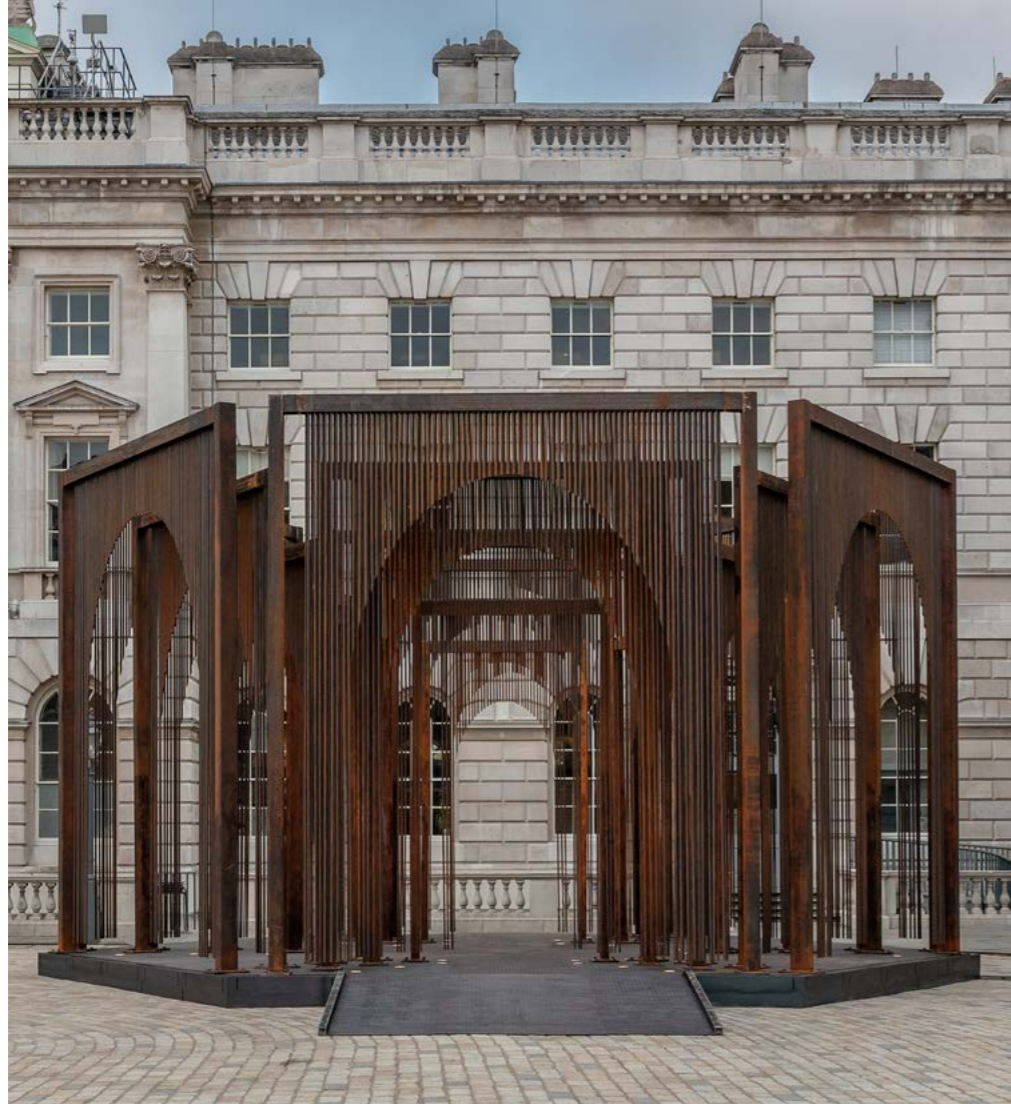
2023



Austria, *BROT: baking the future*



Automorph Network, *Creative Differences*



Turkey, *Open Work*

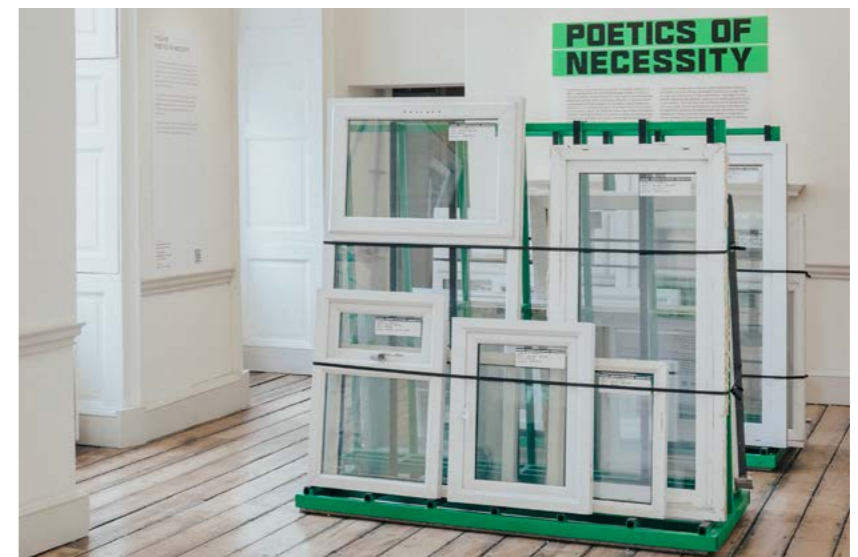
Dubai, *And beyond*



India, *Chowk and Charpai*



Poland, *Poetics of Necessity*

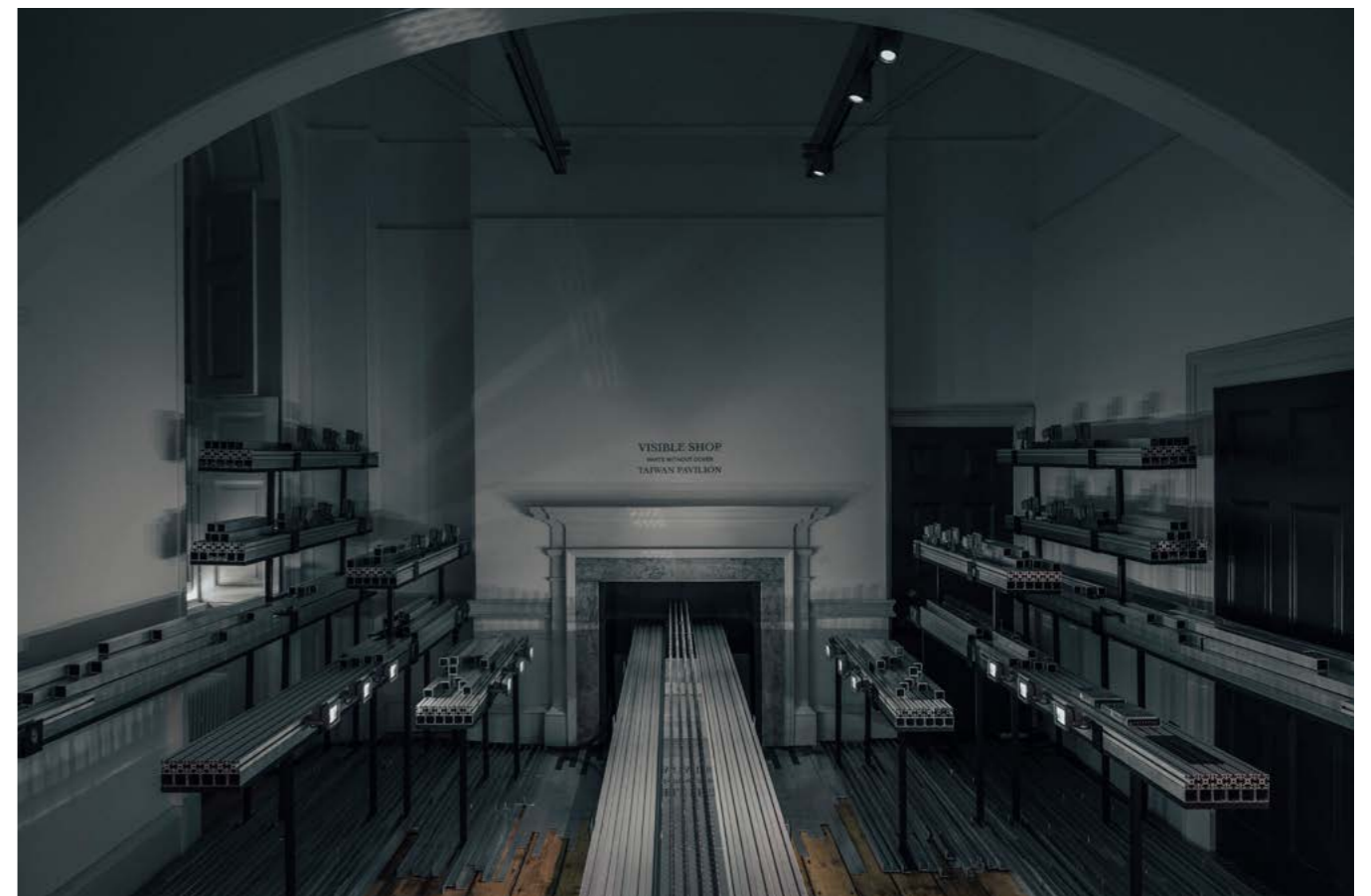


Inner Peace Pavilion



Mudac, G80

Taiwan, Visible Shop



2021

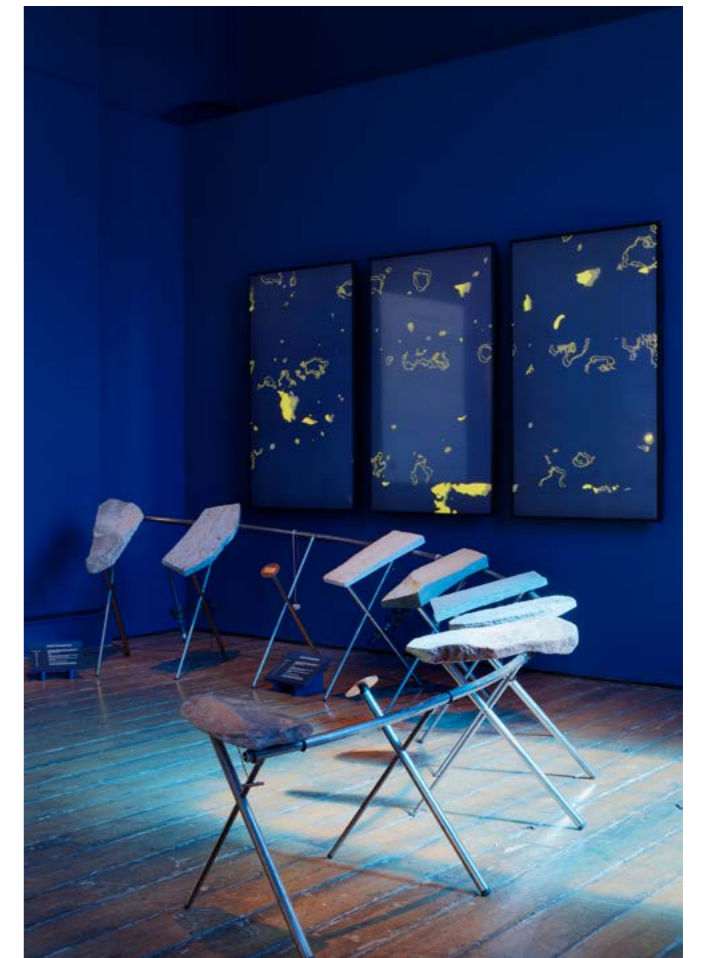
Greece, *Together*



Argentina, *Monte Abierto*

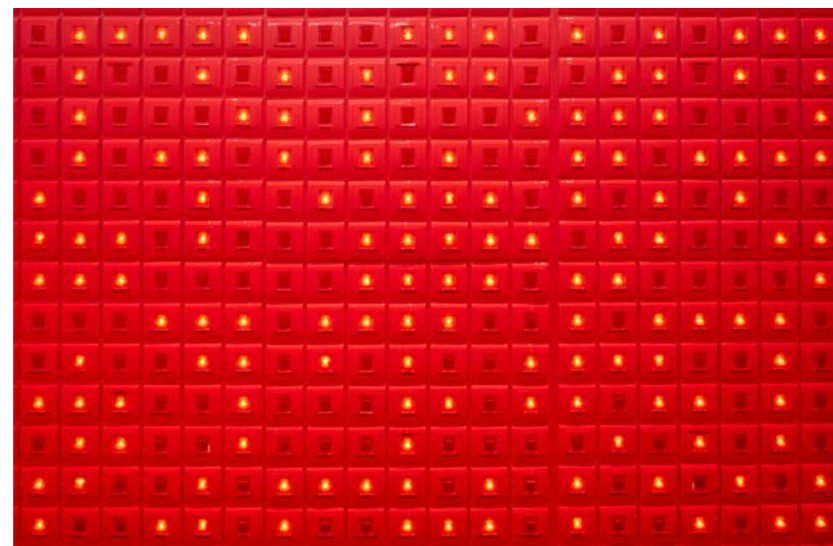


Canada, *DUC&T*



Chile, *Tectonic Resonances*

Israel, *The Boiler Room*



Finland, *Empathy Echo Chamber*

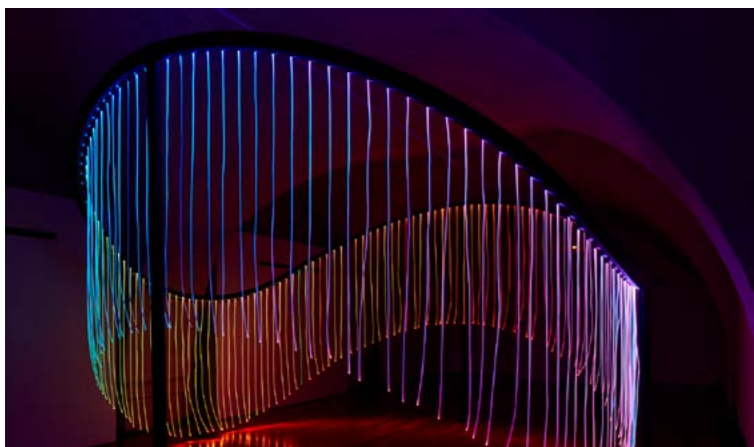


2018



Greece, *Disobedience*

Australia, *Full Spectrum*



Latvia, *Matter to Matter*



Spain, *VR POLIS, Diving into the Future*



UK, *Forecast*



Lebanon, *Mezzing in Lebanon*



USA, *The Immersion Room*

2016

London Design Biennale Medals are prestigious and coveted awards for the best contributions as selected by the Biennale's International Advisory Committee & Jury and the general public.

The medals are designed by Shimell and Madden, a London-based jewellery and metalwork studio whose work is strongly influenced by the universal and symbolic language of geometry.



LDB 2023 medal winners: Taiwan, Poland and Abu Dhabi

The Medals

The medal categories are:

London Design Biennale Medal

Awarded to the most outstanding overall contribution

London Design Biennale Theme Medal

Awarded for the most inspiring interpretation of the theme

London Design Biennale Best Design Medal

Awarded to the contribution with the most exceptional design

London Design Biennale Public Medal

Voted for by visitors

The first three medals are selected by the International Advisory Committee & Jury composed of leading experts in the creative fields with a strong commitment to, and appreciation of, design.

The medal winners are celebrated at the Medal Awards Ceremony hosted by London Design Biennale before an invited audience.

International

The International Advisory Committee & Jury is an honorary group that offers guidance to the strategic direction and promotion of the Biennale, as well as awarding Medals to the most exceptional contributions.

Advisory Committee & Jury

LDB23 International Advisory Committee & Jury

Paola Antonelli, *Senior Curator of Architecture & Design at The Museum of Modern Art; MoMA's founding Director of Research & Development*

Rashid & Ahmed bin Shabib, *Founders of Brownbook*

Victoria Broackes, *Director of London Design Biennale*

Es Devlin OBE, *Artist and Designer*

Nipa Doshi, *Designer and Co-Founder of Doshi Levien*

Ben Evans CBE, *Executive Director of London Design Biennale and Director of London Design Festival*

Marva Griffin Wilshire, *Founder and Curator of SaloneSatellite*

James Lingwood MBE, *Associate Director of Artangel*

Prof. Jeremy Myerson, *Professor Emeritus, Helen Hamlyn Centre for Design, Royal College of Art*

Tosin Oshinowo, *Founder and Principal Architect at cmDesign Atelier*

Jonathan Reekie CBE, *Director of Somerset House Trust*

Dr Christopher Turner, *Keeper of Design, Architecture and Digital at the V&A Museum*

Events &



Rt. Hon Lucy Frazer KC MP with LDB exhibitor Ai-Da

Official Receptions

In 2023, London Design Biennale and invited guests were hosted at 10 Downing Street by the Rt. Hon Lucy Frazer KC MP, Secretary of State for Digital, Culture, Media and Sport (DCMS). Top-level receptions are held also at Somerset House, as well as at government offices and embassies across the city, celebrating London Design Biennale and the unique reach of its community.

The exhibition opens with the Medal Awards Ceremony, held in the historic Portico Rooms of Somerset House. This is followed by a VIP Private View, which offers exclusive early access to the exhibition and the opportunity to meet fellow participants and distinguished guests.

There are also opportunities for exhibitors to host their own receptions, dinners, special visits and tours for invited guests. Availability is limited by capacity and early reservations are highly recommended.

Public



Ana Yang, Judy Ling Wong, Dr Dan Lockton, Indy Johar

Programme

To maximise the reach of the exhibition and countries' contributions, London Design Biennale produces the **Biennale Forum** and **Biennale Sessions**, a dynamic programme of talks, workshops, screenings, roundtables and performances. The programme brings together designers and curators participating in the Biennale with other global game-changers and experts across disciplines and sectors. It provides a public forum for creative exchange and further exploration of the ideas and innovations on display.

The 2023 programme, delivered in partnership with Chatham House and King's College London, was opened by the Pritzker award-winning architect Shigeru Ban with a keynote speech. The 25 days featured a record number of events including 35 talks, 29 workshops and 54 performances.

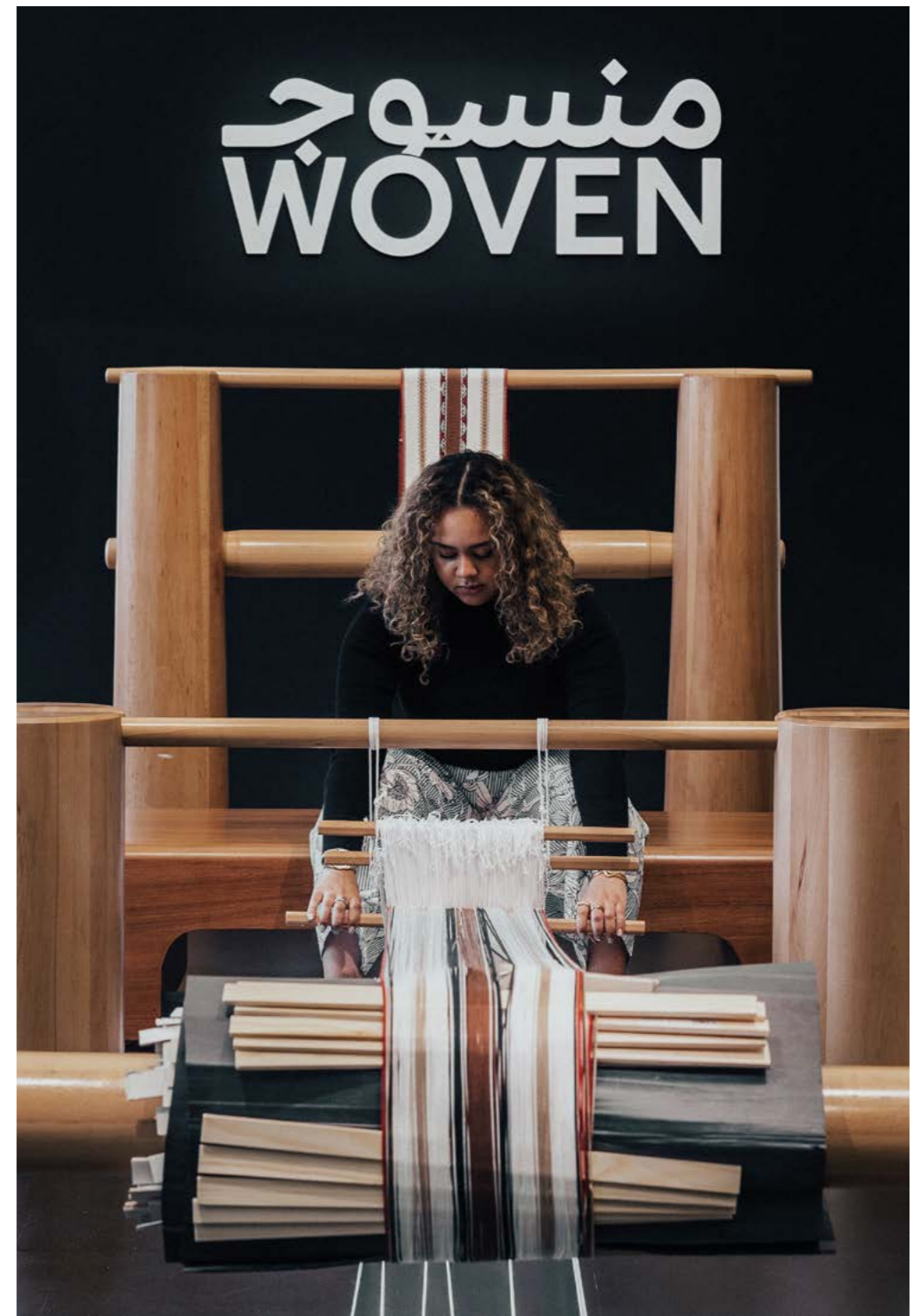
In addition, participants are enabled to activate their own pavilions with exhibitor-led activity, such as workshops and curator tours, or to host their own public sessions as part of the wider programme. Ideas for exhibitor-led and interactive events during the Biennale are welcomed but must be approved by the LDB team in advance.

We encourage discussions to begin as early as possible.

Jayden Ali and Claire Wilcox



Saudi Arabia, *Woven*, 2023



What the Media...

“The London Design Biennale, which opens at Somerset House next week, has sometimes felt like a World’s Fair of blue-sky ideas, most of them thought provoking but few likely to translate to real-world applications. This year, in its fourth iteration, a vein of practicality runs through the biennale, balancing the purely conceptual exhibits.”

Louis Wustemann, Financial Times

“See world leading innovation and creativity from participants across the globe with the return of Somerset House’s biennial design spectacular, London Design Biennale.”

Country and Townhouse

“Highlights include Ukrainian designers collectively demonstrating the connection between creativity and communication during war and an appearance from the world’s first ultra-realistic robot artist, Ai-Da, who questions how collaboration with AI technology might shape our future.”

Connor Sturges, Condé Nast Traveller

“While a similar event in the 80s or 90s might have been dominated by big names, big brands and lots of shiny products, the exhibitors at London Design Biennale take a much broader approach by presenting innovative solutions to the many crises relating to climate and energy, food supply and cost-of-living, and to global conflict.”

Meike Brunkhorst, FAD

“This month-long festival of contemporary design will fill Somerset House with 45 pavilions featuring work from more than 50 countries, cities and territories. As ever you can expect an eclectic line-up of design spectacles across its duration.”

TimeOut

“[The 2023] theme is The Global Game: Remapping Collaborations and the event looks at the design industry’s efforts to overcome global challenges around resources and climate crisis. It also showcases how communities benefit from working together.”

Alice Fisher, The Guardian

“This year’s London Design Biennale, running under the theme of Global Game: Remapping Collaborations, has mostly eschewed the creative industry’s tendency to propel itself towards futuristic solutions. Instead, it has doubled down on design techniques that already exist globally [...] The message is clear: not everything old is worth moving on from.”

Melissa Gronlund, The National

“A giant wind chime, touch-sensing bio-textiles and windows for Ukraine are among the most intriguing installations from the London Design Biennale [...] With the theme of The Global Game: Remapping Collaboration, the event aims to rethink how nations communicate and collaborate.”

Jennifer Hahn, Dezeen

“LDB is a great event that carries an important message to the world through art, and as a platform for exchanging ideas, it is a source of inspiration and hope for a better common future.”

Barbara Schabowska,

Director of Adam Mickiewicz Institute, Poland

“We selected London Design Biennale as an impactful platform to showcase the beauty and to highlight the importance of safeguarding Emirati handicrafts through the Abu Dhabi Pavilion.”

Azza Abdullah Alsharif

*Products Design & Development Senior Specialist,
Department of Culture and Tourism, Abu Dhabi*

“London Design Biennale is an inspiring showground, a global platform for exchanges, and an unparalleled lab for innovative and practical solutions. I was struck not only by the originality and allure of its exhibits but also by the breath-taking richness and visionary approach of its numerous pavilions, public events and countless opportunities for fascinating exchanges.”

H.E. Pedro Serrano

European Union Ambassador to the United Kingdom

“We were proud to represent the Democratic Republic of the Congo at LDB for the first time, and visitors to the pavilion enjoyed seeing Africa from a refreshingly different perspective and learning more about the cultural dynamism of a much-misunderstood country.”

Sam Williams,

Head of Communications, Africell

“This remarkable platform created opportunities for partnerships across various sectors, including the public, business, government, and media.”

Chi-Yi Chang,

President, Taiwan Design Research Institute

“I think that seeing Paper Sanctuary, the Biennale’s first humanitarian pavilion, the poems, music and photos was very good to feel; a way of understanding not through information, but by connecting directly to your heart.”

Shigeru Ban,

Architect, The Humanitarian Pavilion

“Thanks to the opportunity of developing Common Vibrations at London Design Biennale, we strengthened the relationship between Spain and Peru through culture, involving Governments, Universities and Cultural institutions.”

Covadonga Blasco Vezanzones,

Curator, Spain & Peru Pavilion

“The London Design Biennale provided an extraordinary platform for Chile’s pioneering design. This endeavour sparked essential conversations, amplifying the true essence of design and its potential to address global challenges, making the Biennale a guiding light of inspiration for exploring the transformative power of design in addressing pressing world issues, a testament to Chile’s unwavering dedication to leading the way towards positive change.”

H.E. Susana Herrera,

Ambassador of Chile to the United Kingdom

& Previous Participants Said

Taking Part



Eligibility

London Design Biennale invites proposals from embassies, design and innovation councils, government ministries, national and specialised museums, design firms and universities. To represent a country, city or territory applications will need the endorsement of a Central Government, Embassy or recognised cultural, educational or research body. London Design Biennale can help to connect design teams with embassies and institutions. We will also consider independent applications from design teams and curators as 'Special Projects'. If you are unsure whether you meet the criteria for participation, we encourage you to get in touch.

Submissions from all design disciplines are accepted and cross-disciplinary teams and approaches to the theme are welcomed.

Please see the timeline at the end of this document for more information on the application, design and production processes.

How are Projects Selected?

Ministry or Embassy/Administering Body led projects can manage their entry and the selection of design teams in a variety of ways, including an open call or competition, or appointing one or more invited designer(s). Some participants engage a specific museum or gallery to manage the process or curate and produce in-house.

The Biennale team are happy to provide guidance regarding selection processes and advise on timelines and other operational considerations.

Proposals submitted by independent teams will be assessed by London Design Biennale on a case-by-case basis.

Ghana, *Amplify*, 2021



What we Exhibit

London Design Biennale is a global platform for world-leading design and innovation, creativity and research across a broad spectrum of design disciplines.

We are looking for proposals that respond to the Biennale 2025 theme and meet the following criteria:

- Newly commissioned or curated works; or evolution of an existing work that brings a fresh perspective;
- Projects should communicate to the Biennale's wide and diverse audience;
- Installations that showcase the highest level of technical, material and curatorial design; both in terms of content and visual aesthetics;
- Works that demonstrate an approach that is sustainable in the design, production, installation and post-exhibition life of the project;
- Installations that are robust and suitable for long-term display and a large number of visitors, particularly if the installation is interactive;
- Proposals that have an immersive or participatory element are very popular and highly encouraged;
- Although the installation may contain objects made for production, the exhibit should not be a trade or product showcase;
- Works that communicate a local or national cultural identity that speak also to a global audience;
- Installations that uphold UK Health & Safety regulations which may differ from your own.

There are also limited opportunities to display a digital submission as part of the LDB Screening Studio. Participation in the Screening Studio is a flat fee of £5,000 + VAT. For more information please contact London Design Biennale.

Benefits for Diplomatic Offices & Institutions

Diplomatic offices and institutions play a key role in London Design Biennale. By enabling your country, city or territory's participation, you give a voice to your most innovative and imaginative curators and designers and make visible your support of unique and influential ideas.

- Invitations for Ambassadors, Directors and CEOs to high-profile diplomatic events
- Complimentary tickets for the Biennale's Medal Ceremony and VIP Private View
- Discounted tickets to the exhibition and associated events
- Opportunity to host private events at Somerset House at preferential rates during the exhibition
- Complimentary exhibition catalogues
- Access to official photography
- Line credit as 'Administering Body' in the exhibition, as well as online and in the print catalogue
- Dedicated exhibitor page on the London Design Biennale website featuring project information and images
- Alignment with the Biennale's central PR and marketing team in a sustained global communications campaign before, during and after the Biennale

Benefits for Design Team

Design teams participating in London Design Biennale join a community of visionary and renowned creative industry professionals beyond borders. Working across a broad range of design disciplines, designers and curators have the opportunity to present their ideas within a highly anticipated international event and a vital forum which considers the role of design in our collective future.

Working closely with their Administering Body, design teams receive dedicated benefits:

- Alignment with the Biennale's central PR and marketing team in a sustained global communications campaign before, during and after the Biennale
- Dedicated exhibitor page on the London Design Biennale website featuring project information and images
- Opportunity to meet the Biennale's International Advisory Committee & Jury at the Preview
- Invitations to the Biennale's VIP Private View
- Complimentary tickets to the exhibition
- Special friends and family discount rate for London Design Biennale exhibition and public programme
- Opportunity to host private events at Somerset House at preferential rates during the exhibition
- Complimentary exhibition catalogues
- Access to official photography

Benefits for Pavilion Sponsors

For many participants at London Design Biennale, it is essential that they get further support from private and corporate sponsors.

Whilst sponsorship agreements are between participants and individual sponsors., London Design Biennale offers the following benefits to help support the development of these relationships.

- Opportunity to align with London Design Biennale, increasing the sponsor's profile with the international design community and wider public
- Line credit within the installation, in the print catalogue and online as 'Supported By' (please note, no logos are permitted)
- Opportunity to host private events at Somerset House at preferential rates during the exhibition

Participation Fees & Responsibilities

There is a participation fee required to take part in London Design Biennale. Participation fees provide access to all the many benefits of joining the LDB community that are outlined in this prospectus. This includes, but is not limited to: exhibiting and debating on a world stage alongside peers; guidance and support through the design process; exhibition and operational logistics; security; visitor experience staffing; ticketing; signage; marketing; catalogue entry; public events; and involvement in the public programme, receptions, parties and networking opportunities.

Fees to take part start at £8,000 +VAT and go up to £45,000 +VAT for indoor galleries. Fees are allocated according to the chosen exhibition space and its relative location within the venue.

It is important to consider that the participation fee represents only one part of the financial obligations of taking part. Wider production costs are difficult to estimate without a detailed proposal but, as a general guideline, the participation fee is often approximately one third to a half of the overall cost. Exhibition costs for open-air exhibits can be considerably higher, particularly if additional security is required.

Participants are responsible for fully funding their exhibition and all costs including research, development, design and production. This includes transportation, contractor fees and insurance. Please get in touch with the London Design Biennale team for a full list of responsibilities and for guidance on budgeting.

Somerset House is a Grade I historic building and as such is subject to certain conservation requirements. You are encouraged to discuss your design proposal with the London Design Biennale team in the early stages of planning your installation for feedback that considers the special requirements of the building. In some cases, participants may be required to work with approved contractors.

Please do not hesitate to get in touch with questions regarding the application process, your proposal or any queries about the theme and available spaces.

The online application form is available on the London Design Biennale website and includes a full set of project manuals and guidelines and other resources to help inform your application. For more details on the process and schedule, please refer to the timeline at the end of this document.

Germany, *Spoon Archaeology*, 2021



Legacy

The impact of London Design Biennale doesn't end when the exhibition is over. The ideas, exchanges and collaborations that spark during the development and live exhibition period are a vibrant legacy for years to come. Works that are displayed at the Biennale often go on to be re-shown, either in the commissioning country or on tour in other distinguished institutions, so that ideas continue to develop. The Biennale also serves as a testing ground for installations already in development, either previewing or extending the scope of existing work as part of a wider research project.

Venues that have hosted installations after display at London Design Biennale include the Design Museum, London Design Festival, COP26, and Embassies throughout London.

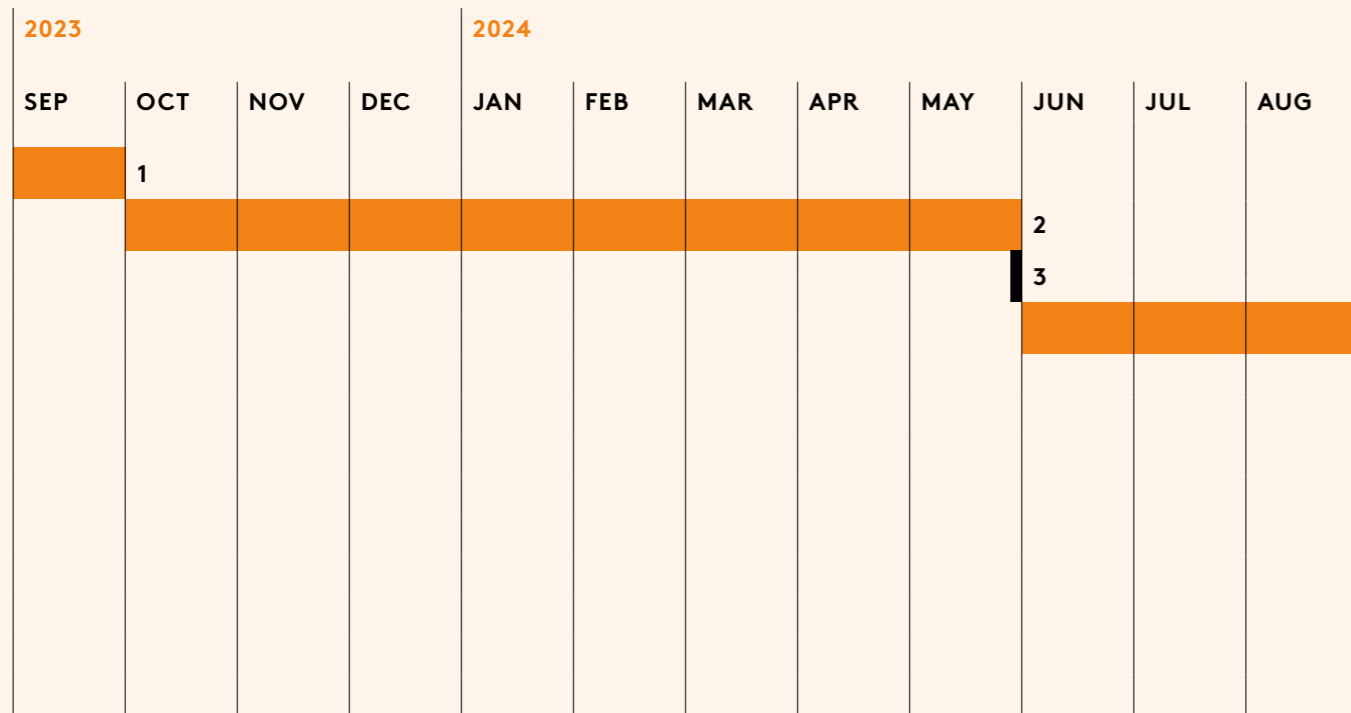


Lebanon, *The Silent Room*, 2018

Pavilion of the African Diaspora, 2021



Timeline



1. SEPTEMBER 2023
APPLICATIONS OPEN

Online applications open to commissioning bodies, designers and independent curators. Proposals can also be submitted directly to the London Design Biennale team via email. Spaces can be reserved by paying a deposit.

2. OCTOBER 2023—MAY 2024
DESIGN CONSULTANCY PHASE

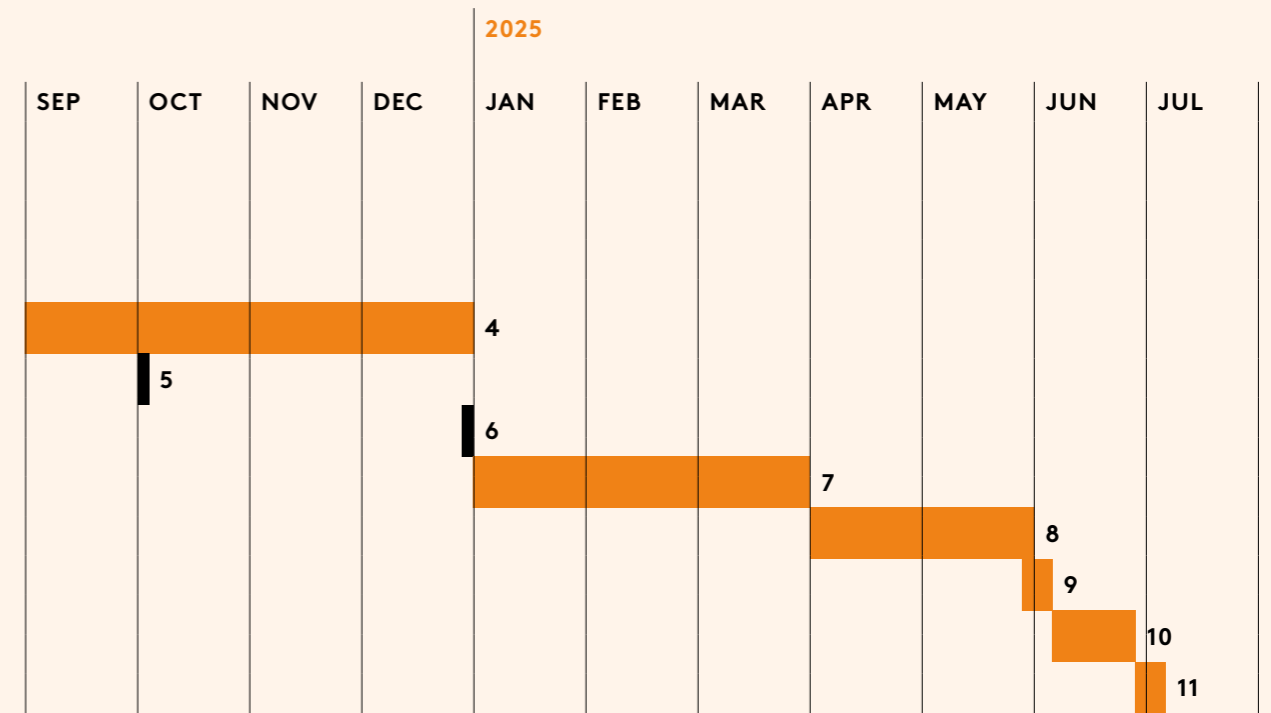
The LDB team will be available to support applications with feedback, site visits and reservations, and to support diplomatic offices and institutions with open calls. It is recommended that official open calls run within this timeframe, to allow appropriate time for development.

3. 31 MAY 2024
SUBMISSION DEADLINE FOR DESIGN CONCEPT

Submissions close for design proposals and deadline for payment of any outstanding deposits.
**Proposals may be considered after this deadline on a case-by-case basis and if availability of spaces allows.*

4. JUNE 2024—DECEMBER 2024
DESIGN DEVELOPMENT

Conversations between design teams and London Design Biennale to address any feasibility concerns. Detailed design proposals are submitted, including plan and elevation drawings and specifications of materials, AV, lighting and other requirements. Design teams will be put in touch with Somerset House approved contractors to receive quotes for installation, fabrication & shipping.
**New proposals may be considered during this phase depending on suitability and availability of space.*



5. 1 OCTOBER 2024
PARTICIPATION FEE DEADLINE

The remaining participation fee is invoiced.

6. 31 JANUARY 2025
DESIGN FREEZE

Project Teams submit final drawings and no further changes are made. Renders and high-resolution visuals are produced.

7. JANUARY—MARCH 2025
DESIGN PRODUCTION

Ongoing work on installation, fabrication and production. Completion of all necessary paperwork for London Design Biennale and Somerset House including Health and Safety forms.
**Your individual production schedule will be determined based on the complexity of your project and in collaboration with approved contractors. Production may need to commence earlier in the timeline.*

8. APRIL—MAY 2025
FREIGHT TO LONDON

9. 30 MAY—4 JUNE 2025
INSTALLATION AT SOMERSET HOUSE
Access during these dates will depend on the installation schedule. Please do not book travel until dates are confirmed with the LDB team.

10. 5—29 JUNE 2025
LONDON DESIGN BIENNALE

The Biennale is open to visitors and public. Key events, such as the Press View, Medal Ceremony and VIP Private View typically occur in the opening days – schedule to be confirmed.

11. 30 JUNE—4 JULY 2025
DEINSTALLATION AT SOMERSET HOUSE

Access during these dates will depend on the deinstallation schedule

The dates set out are an outline schedule and are subject to adjustment. Up to date timelines will be communicated with confirmed and interested parties.

Partnership Opportunities

London Design Biennale is a celebration of the importance and universal relevance of design in contemporary life, business and culture, and offers an exceptional opportunity for Partners to be represented on a world stage. A partnership with the Biennale demonstrates a Partner's standing as a thought-leader; a major influencer in the international design field; and as a supporter of problem solving, ambition and talent.

London Design Biennale offers a number of opportunities for brands and services to engage with its influential international audience.

In addition to the below options, London Design Biennale will create bespoke Partner packages and tailor opportunities to best suit your requirements. Working closely with the Biennale team and its PR and media partners, a Partner will receive numerous exciting benefits.

PARTNERSHIP OPPORTUNITIES TO EXPLORE IN 2025 INCLUDE:

- HEADLINE PARTNER OF LONDON DESIGN BIENNALE
- LONDON DESIGN BIENNALE MEDAL PARTNERSHIP (4 CATEGORIES)
- OFFICIAL BIENNALE EVENTS SUPPORT
- LATES SPONSOR
- BESPOKE PRIVATE EVENTS
- THOUGHT LEADERSHIP SPONSOR
- WIDENING ACCESS / PARTICIPATION FOR UNDER-REPRESENTED GROUPS



London Design Biennale 2023



Serbia, 134/Sacred geometry, 2023

“London Design Biennale demonstrates the UK’s place as a world leader in design and a global focal point for the creative industries. It was a great privilege to be part of the Biennale and we’re excited to have recently expanded the capability of our Panasonic Design studio here in London, in one of the most thriving creative economies in the world.”

SHIGEO USUI, DIRECTOR
PANASONIC DESIGN

Es Devlin, *Mask II*, 2018





**LONDON
DESIGN
BIENNALE
2025**

Contact

VICTORIA BROACKES

DIRECTOR

victoria@londondesignbiennale.com

ANGELA BOURDERYE-MUNOZ

EXTERNAL RELATIONS AND EVENTS MANAGER

angela@londondesignbiennale.com

CAROLYN ADDELMAN

PRODUCER / SENIOR PROJECT MANAGER

carolyn@londondesignbiennale.com

LONDON DESIGN BIENNALE

20-21 Bloomsbury Way

London WC1A 2TH

LONDONDESIGNBIENNALE.COM

PHOTOGRAPHY

Taran Wilkhu, Lucy Ranson, Iona Wolff,
Gianfranco Chicco & Suzanne Plunkett

**LONDON
DESIGN
BIENNALE
2025**